

DBQ Instructions for Native Americans and their Geography

Essential Question: How did the Native Americans adapt to their Geography?

You will be completing a DBQ for this Unit. The question that must be answered in your essay is: How did the Native Americans adapt to their Geography? You must read and answer all the documents. Your essay must have explicit textual based evidence from the documents. (This means to write your answers using quotes or paraphrasing). You will be given ample time in class to complete this.

Rubric:

___/ 15	Working in a group
___/ 50	10 points for each set of questions completed
___/ 35	Completed Essay
___/100	Total

DBQ Instructions for Native Americans and their Geography

Essential Question: How did the Native Americans adapt to their Geography?

You will be completing a DBQ for this Unit. The question that must be answered in your essay is: How did the Native Americans adapt to their Geography? You must read and answer all the documents. Your essay must have explicit textual based evidence from the documents. (This means to write your answers using quotes or paraphrasing). You will be given ample time in class to complete this.

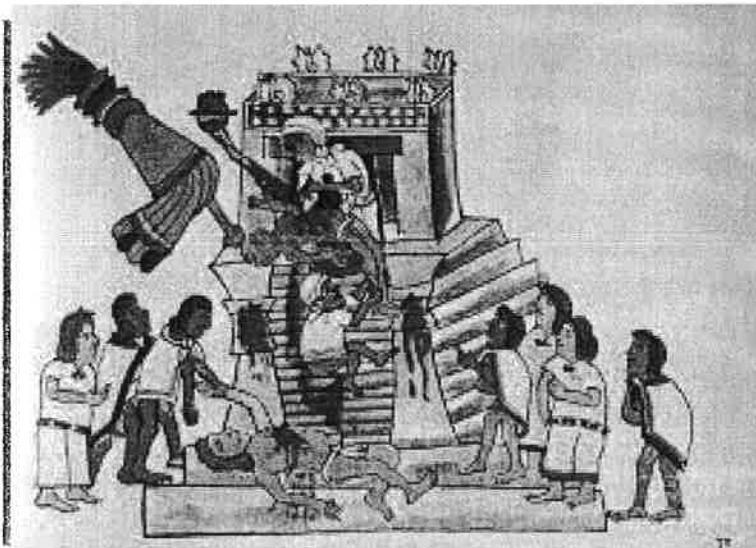
Rubric:

___/ 15	Working in a group
___/ 50	10 points for each set of questions completed
___/ 35	Completed Essay
___/100	Total

How did Native American's adapt to their environment?

1. The Aztecs

The Aztecs were farmers who dug vast canals to supply water to their fields. In the swampy regions along Lake Xochimilco, the Aztecs implemented yet another method of crop cultivation. They built what are called *chinampas*. Chinampas are areas of raised land, created from alternating layers of mud from the bottom of the lake. These "raised beds" were separated by narrow canals, which allowed farmers to move between them by canoe. The chinampas were extremely fertile pieces of land, and yielded, on average, seven crops annually.



The Aztec war god Huitzilopochtli

The Aztecs worshipped a war god called Huitzilopochtli, who took on the likeness of the sun over time. It was thought that in order to insure the sun's arrival each day, a steady supply of live human hearts had to be offered in holy sacrifice. Without the sun raising their crops would not grow. The Aztecs depended on Huitzilopochtli and the other gods and sacrificed humans to keep them happy.

The Aztecs wrote down much of their history and culture in a series of books called codices. The early codices are mostly picture books but later ones are written in Nahuatl or Spanish. The drawing of the human sacrifice appears in the Codex Magliabechiano.

Answer the following questions in complete sentences.

- 1) In what ways did the Aztecs change the environment to suit their needs?
- 2) How do historians know so many things about the Aztecs?
- 3) Explain how the Aztecs used human sacrifice to adapt to their environment.

How did Native American's adapt to their environment?

2. The Iroquois (The Haudenosaunee)

Haudenosaunee (hoe-dee-no-SHOW-nee) means "people who build a house." The name refers to a confederation or alliance among six Native American nations who are more commonly known as the Iroquois Confederacy. One of the most important events that shaped the Haudenosaunee was the creation of the Great Law of Peace. The Peacemaker (also known as Hiawatha) brought peace to the 6 nations who were once constantly at war with one another over resources. He taught the power of Reason, not force. The Great Law of Peace emphasizes three principles: Righteousness, Justice, and Health. The Great Law of Peace provides the Haudenosaunee people with instructions on how to treat others, directs them on how to

maintain a democratic society, and expresses how Reason must prevail in order to preserve peace.



The Hiawatha Belt made out of wampum (beads made of shells that the Iroquois traded other East Coast tribes for) symbolizes the unity of the original five Haudenosaunee nations,

connected by the Great Law of Peace. Each white square and the tree in the center, represents one of the original five nations, the Mohawk, Oneida, Onondaga, Cayuga, and Seneca. The Tuscarora Nation, the sixth nation in the Confederacy, joined after this belt was created.

The Haudenosaunee had a special relationship with the Three Sisters, what they called their three main agricultural crops. Squash, corn, and climbing beans were grown together. The three crops benefit from each other. The corn provides a structure for the beans to climb, eliminating the need for poles. The beans provide the nitrogen to the soil that the other plants utilize and the squash spreads along the ground, blocking the sunlight, which helps prevent weeds. The squash leaves act as a "living mulch," creating a microclimate to retain moisture in the soil, and the prickly hairs of the vine deter pests. The Haudenosaunee believe that the Three Sisters were a gift from the creator, several legends and traditional stories tell of the importance of the Three Sisters.

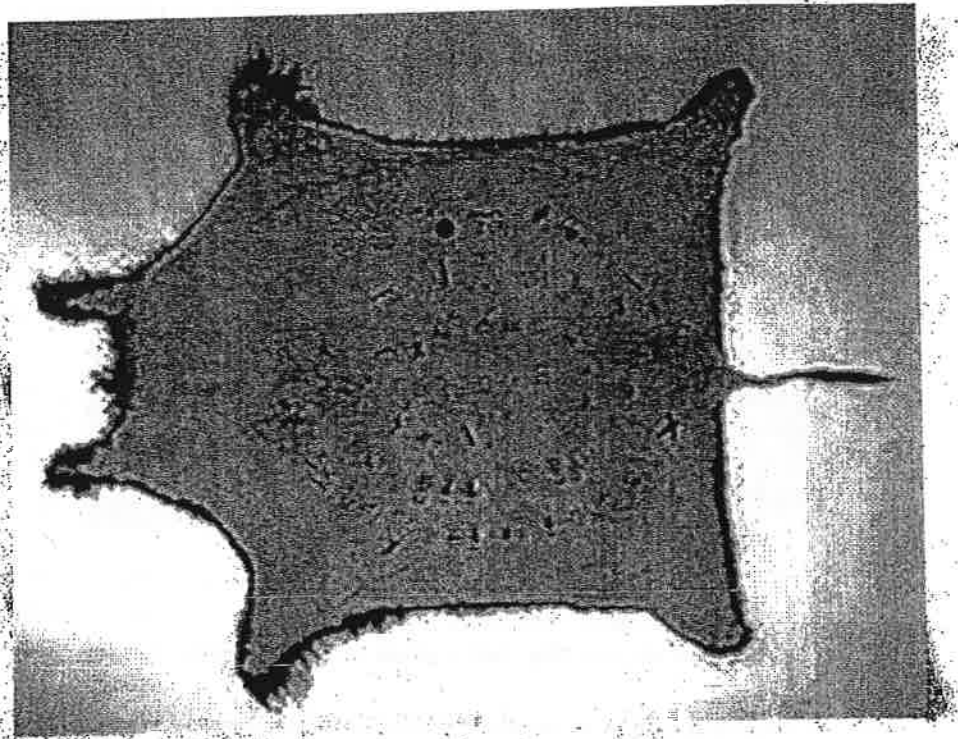
Answer the following questions in complete sentences.

- 1) How did the Great Law of Peace change how the Haudenosaunee lived?
- 2) What can we discern about Haudenosaunee trade based on their use of Wampum?
- 3) How did the Haudenosaunee depend on the Three Sisters?

How did Native American's adapt to their environment?

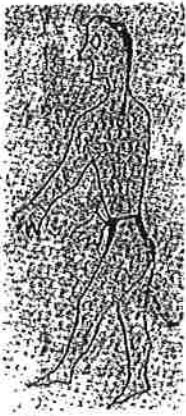
3. The Sioux (including the Lakota, Nakota & Dakota)

The Sioux live on the Great Plains. Rain in this area is often scanty and unpredictable. The climate is usually dry year-round, with hot temperatures in the summer and bitter cold weather in the winter. Much of the area is a grassland, which supported huge herds of bison, or buffalo as they are usually called. The Sioux were dependent on the buffalo and utilized every aspect of the beast, nothing went to waste.



The Sioux were nomadic, following the herds of buffalo for food. They

spent summers on the open plains hunting buffalo. When the weather grew colder, family groups would seek protection from the frigid winds, moving their camps to wooded areas. It is here that the Sioux would create Winter Counts. Winter Counts are histories or calendars in which events are recorded by pictures, with one picture for each year. They used bison hides as a surface to record the Winter Count



Winter counts were pneumatic devices that triggered extensive oral histories. Each year was named for an event and the pictures, referring to the year names served as a reference source that could be consulted regarding the order of the years. People knew the name of the year in which other important events occurred, and could place these in time by referring to the winter count.

1837-38

Small pox year.

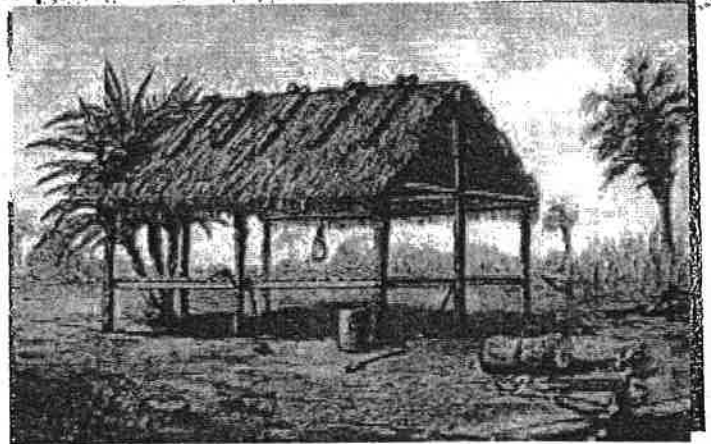
Answer the following questions in complete sentences

1. What natural resources did the Sioux dependent on?
2. How did this resource influence the way the Sioux recorded their history?
3. Why do you think the Sioux used pictographs to record their history?

How did Native American's adapt to their environment?

4. The Seminole

The story of the Seminole is one of resistance. The word Seminole comes from the Spanish 'cimarrones', or free people, because they would not allow themselves to be dominated by the Europeans. The Seminole are actually a mixture of different tribes, as well as runaway slaves from the southeast who fled English colonies to Spanish Florida. The Seminole found shelter in the wild interior of Florida. Their culture was steered by the fact they were constantly on the run, resisting European settlement and avoiding capture. They became dependent on the Everglades to provide food, shelter, as well as protection from Europeans. The Seminole homes were called chickee, palmetto thatch over a cypress log frame – using what was available to them within the environment to create shelter. The Florida environment also influenced Seminole legends.



Little Frog - As Told by Betty Mae Jumper

"This story was told to me by my grandmother when I was just a baby. Where we lived, the sounds in the woods were very important to us. We were always asking, "What is that sound from?" A lot of times we were answered with a story such as this one."

The little green frog was sitting on the edge of the water lilies sleeping away. A big ol' rabbit came hopping along, came upon the frog and said, "Hi there! Why are you sleeping? It's too pretty a day to sleep. Wake up! Wake up!"

"I don't have to do anything," said the irritated little frog. But that pretty ol' pesky rabbit kept on until the little frog got really mad and told him, "I'll fix you up."

So little frog started singing his funny little song or noise he makes to call the rain. Within a few minutes, the black cloud came and the wind started blowing. Then the rains came and soaked the ol' rabbit so much he got cold and ran home.

Whenever you hear the frogs singing away today, better be near shelter, because they are warning you that rain is coming soon.

Answer the following questions in complete sentences.

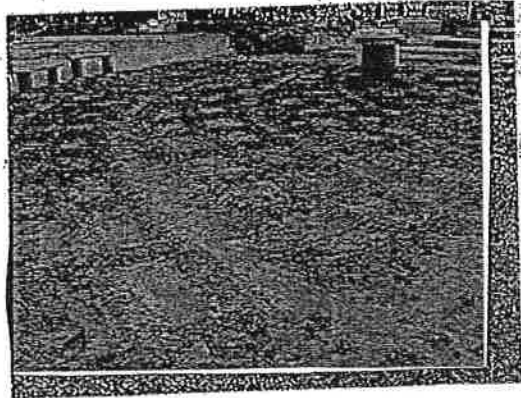
- 1) How did the Seminole get their name?
- 2) How did the Seminole use the environment to provide shelter?
- 3) How did nature influence Seminole story telling?

How did Native American's adapt to their environment?

5. The A:Shiwi (The Zuni)

Hayes Lewis, of the A:shiwi Nation, lives just 20 miles from the Arizona border in Zuni, New Mexico. Here, he shares his knowledge about the spiritual connection among the land, his people, and the crops that sustain their lives.

"Agriculture has been an important and constant practice among the A:shiwi people for centuries. We either farm out in the fields or create gardens. Many started [to farm] as children, helping our parents create small gardens. The primary method we use is a waffle garden. If one looks at the garden from an elevated view, its layout resembles a waffle."



"The purpose of the waffle garden is to provide the kind of produce that normally will not grow on a large scale. These plants require more water and constant tending. Waffle gardens are fairly small, and they are usually enclosed. Fences or other forms of protection are usually built around the gardens to protect the plants from rabbits, prairie dogs, or rodents. The fence also provides protection from the wind."

"The elevation at Zuni is approximately 6,800 feet above sea level. Since it is semi-arid, there is not much rainfall. Whenever there is rain, it needs to be captured, which is why berms—raised mounds of earth—are built up around each plant."

"Seeds are significant in all our cultural practices throughout the year. Two of the most important religious/cultural ceremonies occur during the summer and winter solstices. During the winter, the clans honor the seeds. Representative samplings of seeds are taken to family gatherings and honored along with our ancestors with an offering of sacred cornmeal, songs, and prayer. There is a direct, reciprocal connection between the corn and the spiritual practice of the A:shiwi people. Corn is used in the preparation of the sacred cornmeal used by the A:shiwi people for daily prayer and as spiritual offerings to sustain the deities and ancestors. The corn is ground and prepared with special prayers for daily use and for each ceremonial/religious event held throughout the year. Each household maintains a supply of sacred cornmeal for such purposes. During the winter Sha'lako Ceremony, solstice fasting period, and other ceremonies held during the winter period, the seeds are blessed and honored as part of these ceremonies."

Answer the following questions in complete sentences.

- 1) How does the Zuni use of a waffle garden show an adaptation to their environment?
- 2) What is the purpose of a berm?
- 3) What significance do seeds and cornmeal play in Zuni culture?